

Respondents to the Neighbourhood Plan Survey flagged 9,030 specific concerns about traffic and road safety on different roads across our parish.

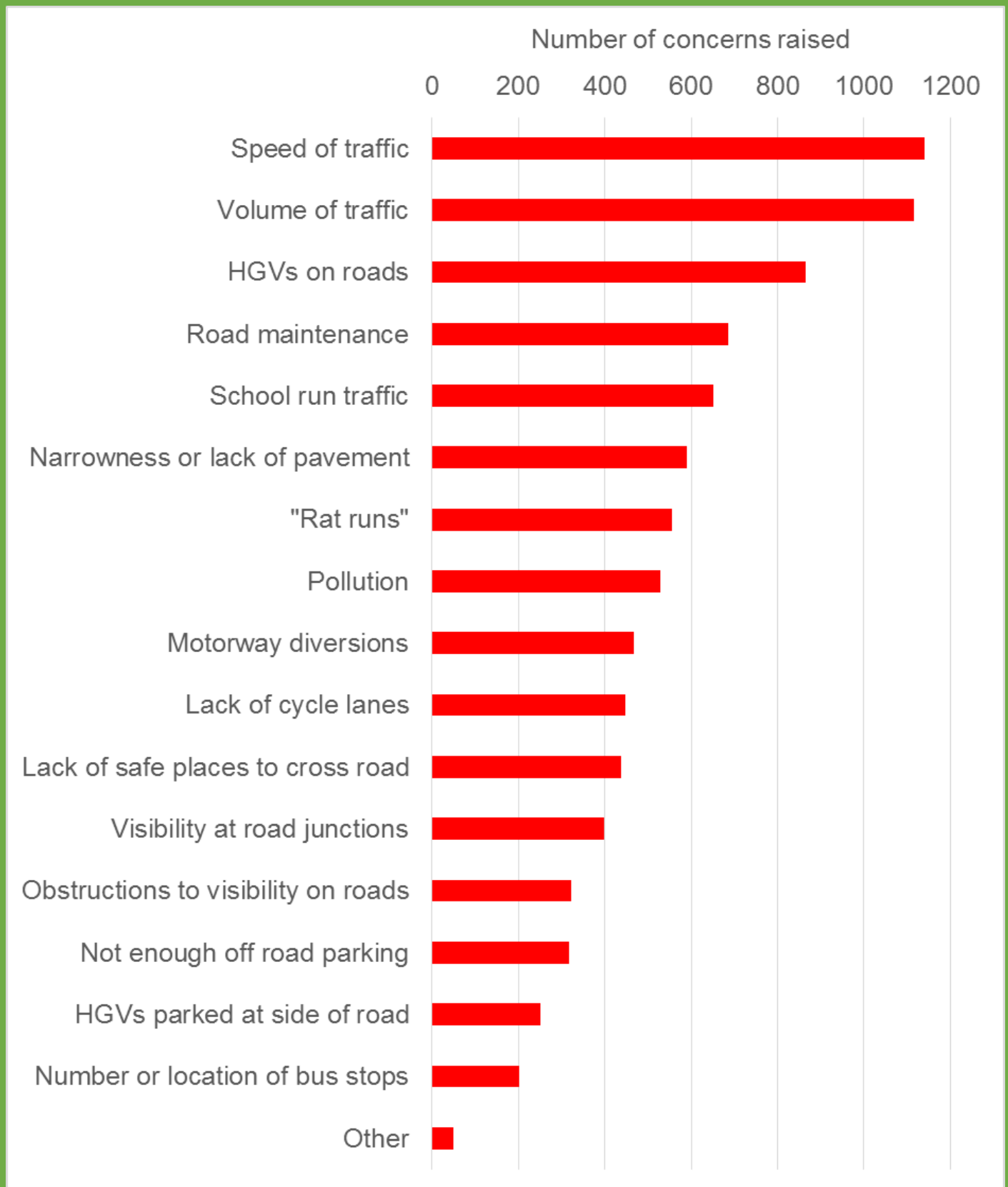
Our analysis of your responses highlighted the safety of roads in and around Boughton Aluph as an area of particular concern, specifically:

- speed of traffic on the A251 Faversham Road and Wye Road;
- conflicts at junction of Wye Road and The Lees;
- lack of visibility at junction of Wye Road and A28 Canterbury Road;
- safety of pedestrians, particularly at the junction of Wye Road, The Lees and Pilgrims Way; and
- HGVs on rural roads.

The Parish Council is working in partnership with Boughton Aluph & Eastwell Residents' Association to consider what traffic management solutions will resolve these issues and improve the local environment for residents and other road users.

Neighbourhood Plan Survey Results - Traffic

What are your concerns when travelling on roads in our parish?



Source: Boughton Aluph & Eastwell Neighbourhood Plan Survey 2016

Together, we have revisited a traffic survey report commissioned by the Parish Council in 2014 in which specialist traffic consultants outlined a number of traffic management solutions for the village. Some of these are shown on the following display boards.

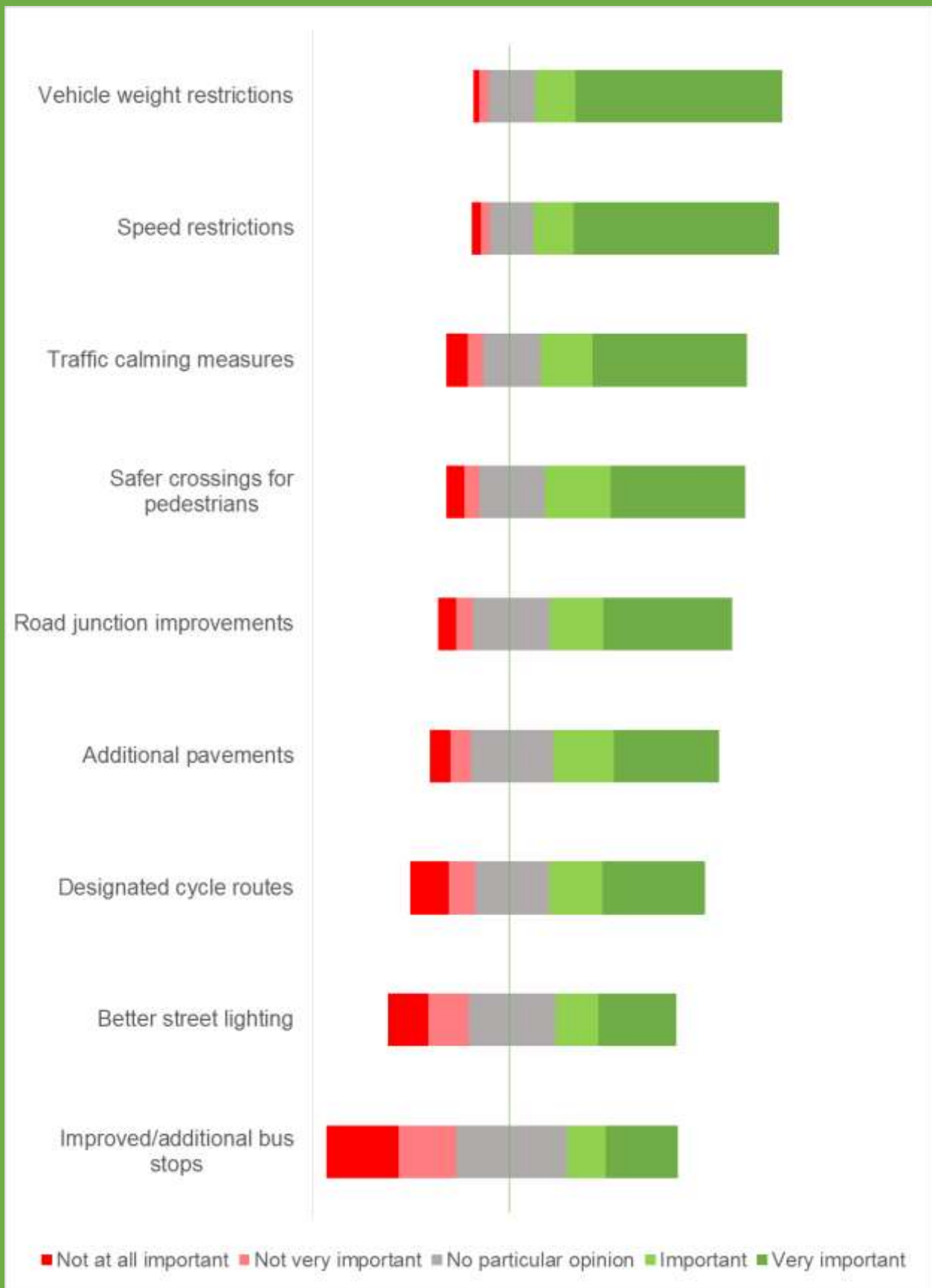
We need you to tell us which of the solutions you support so that we can petition Kent County Council Highways with a traffic management strategy for Boughton Aluph which is based on the preferred option(s) of residents.

Final decisions on traffic management solutions are a matter for the highways authority and will be subject to available funding. Once a strategy has been agreed which has the support of local people, we will work to secure funding to implement it. The project might be included in the Neighbourhood Plan as a candidate for some of the Community Interest Levy (CIL) funds that may come from new development in our parish.

Your input is essential. We will have to demonstrate there is local support if we are to bring about change. Tell us your priorities.

Neighbourhood Plan Survey Results – Traffic

What could be done to encourage road safety in our parish?



OPTION 1:

INTRODUCE TRAFFIC ISLANDS ON THE A251 FAVERSHAM ROAD

Measures are already in place to reduce speeds on the A251 Faversham Road, but the limits are still regularly exceeded. This might be addressed by introducing traffic islands at relevant points along the residential section of the road, where the 40mph limit is currently in place.

Example of traffic island at Challock



This will result in a slight narrowing of the carriageway, which will impact on drivers' perception and make them feel the need to lower their speeds as they navigate past the islands.

A similar scheme was introduced in Challock. This reduced the overall width of the carriageway by around 1.5 metres.

Traffic islands would also help pedestrians to cross this busy road benefitting both residents and the many walkers that pass through our village.

Tell us what you think. Fill in the questionnaire.

OPTION 2:

REDESIGN THE JUNCTION OF THE A251 FAVERSHAM ROAD & THE LEES

This junction could be redesigned in order to reduce the speed of traffic along The Lees and also the number of HGVs using The Lees and Wye Road. It would not require any realignment of the footpath nor affect access to adjacent properties.

This could be accomplished by building a raised table junction with a differently coloured surface, which would effectively form a large speed bump. This is shown in yellow.



At present, the junction layout encourages drivers to enter and exit at speed. It can also be misinterpreted by HGV drivers. Despite Wye Road and The Lees being access only to HGVs, a number travel along its length each day.

Example of a raised table junction.

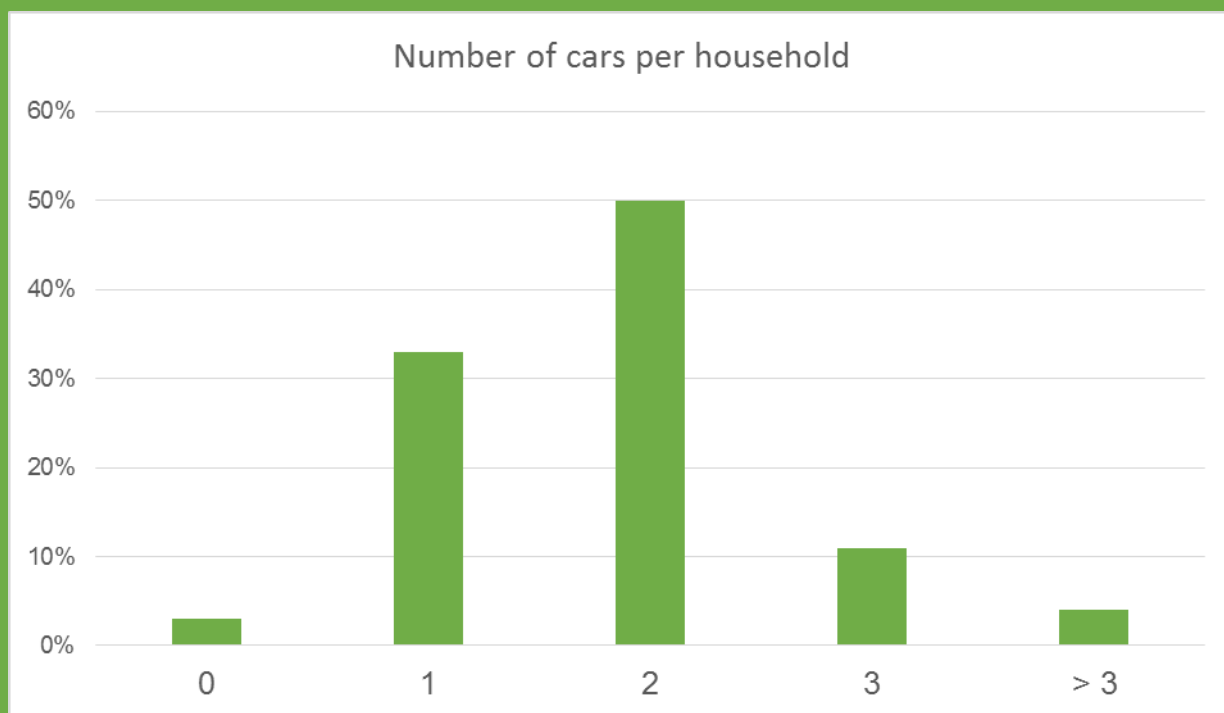


This would also reduce the speed of vehicles leaving The Lees travelling towards Ashford, thereby reducing accidents by changing perceptions of a quick exit and entry.

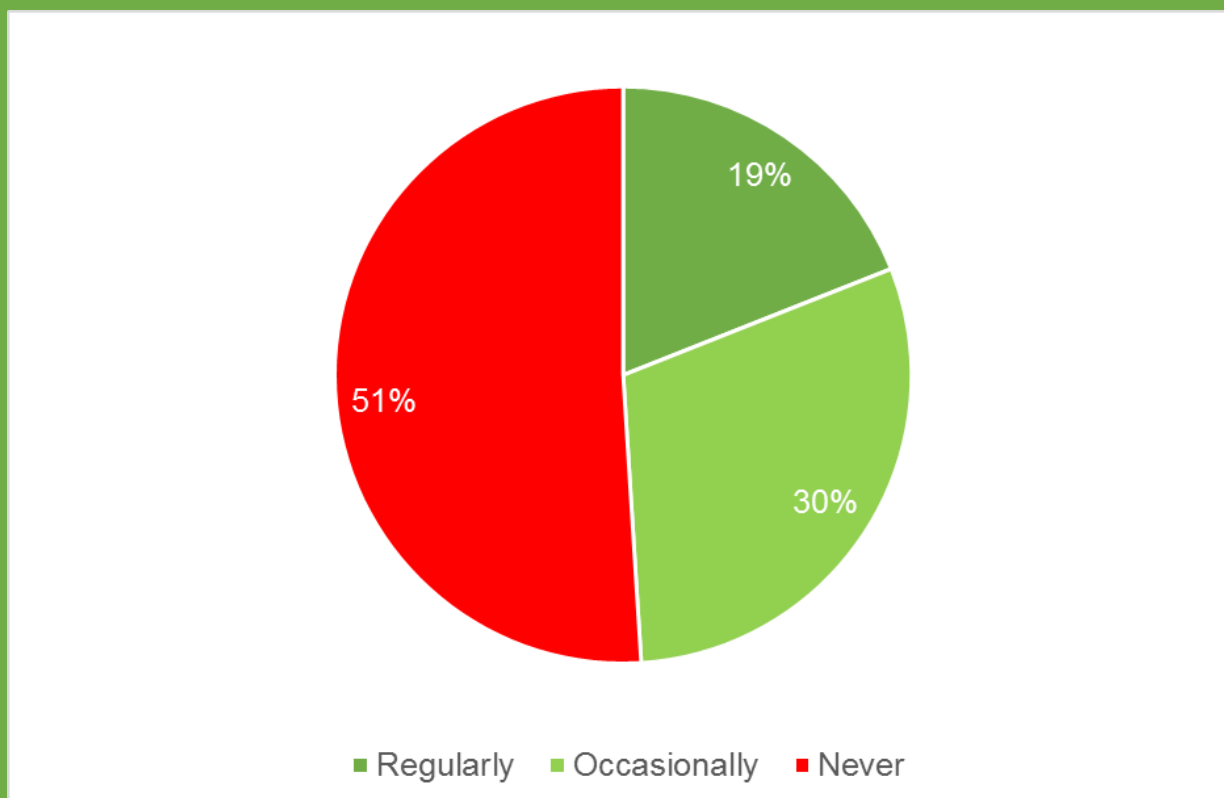
Tell us what you think. Fill in the questionnaire.

Neighbourhood Plan Survey Results – Traffic

How many cars does your household have?



How often do you cycle in our parish?



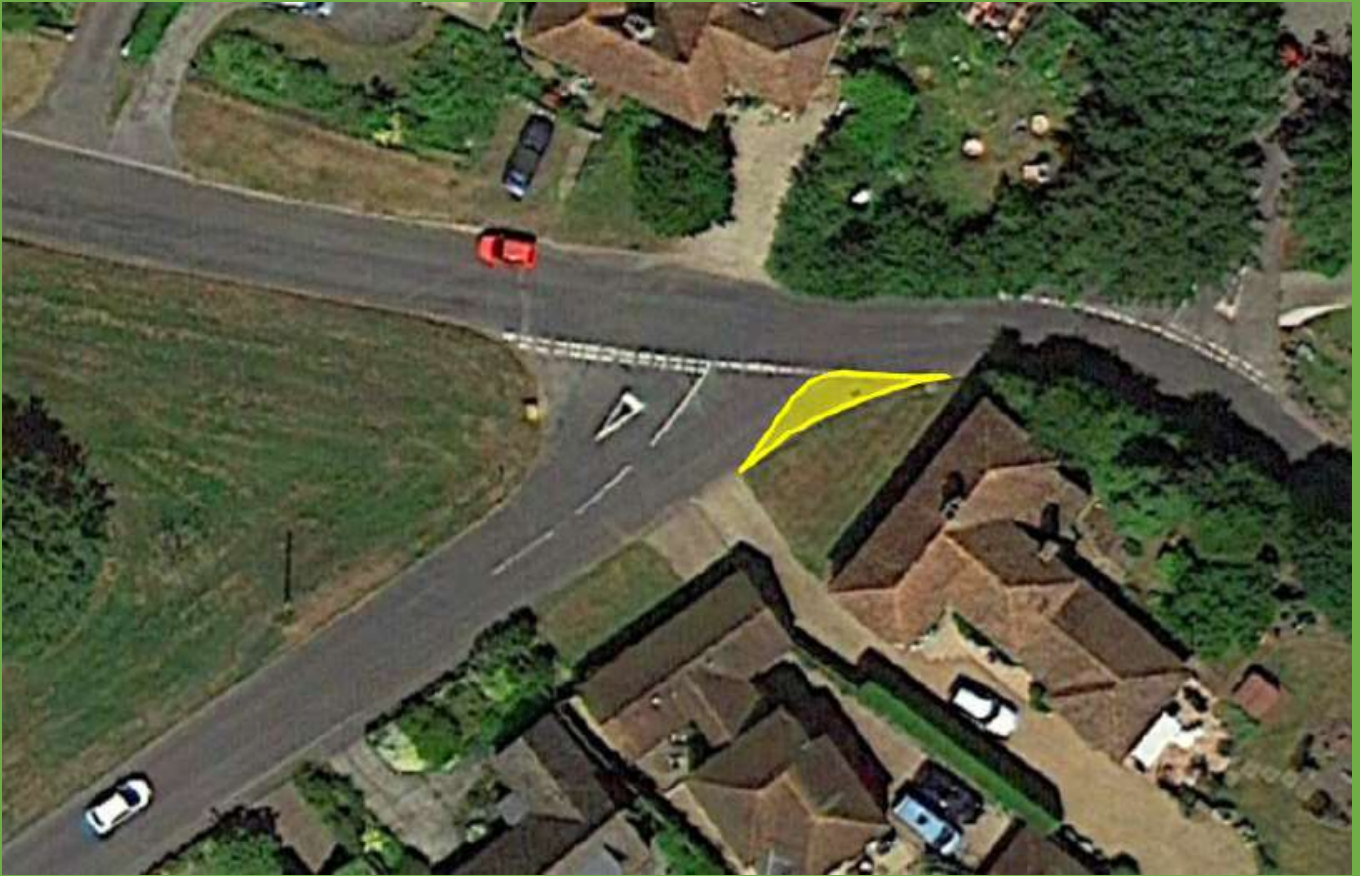
OPTION 3:

REDESIGN THE JUNCTION OF THE LEES & WYE ROAD

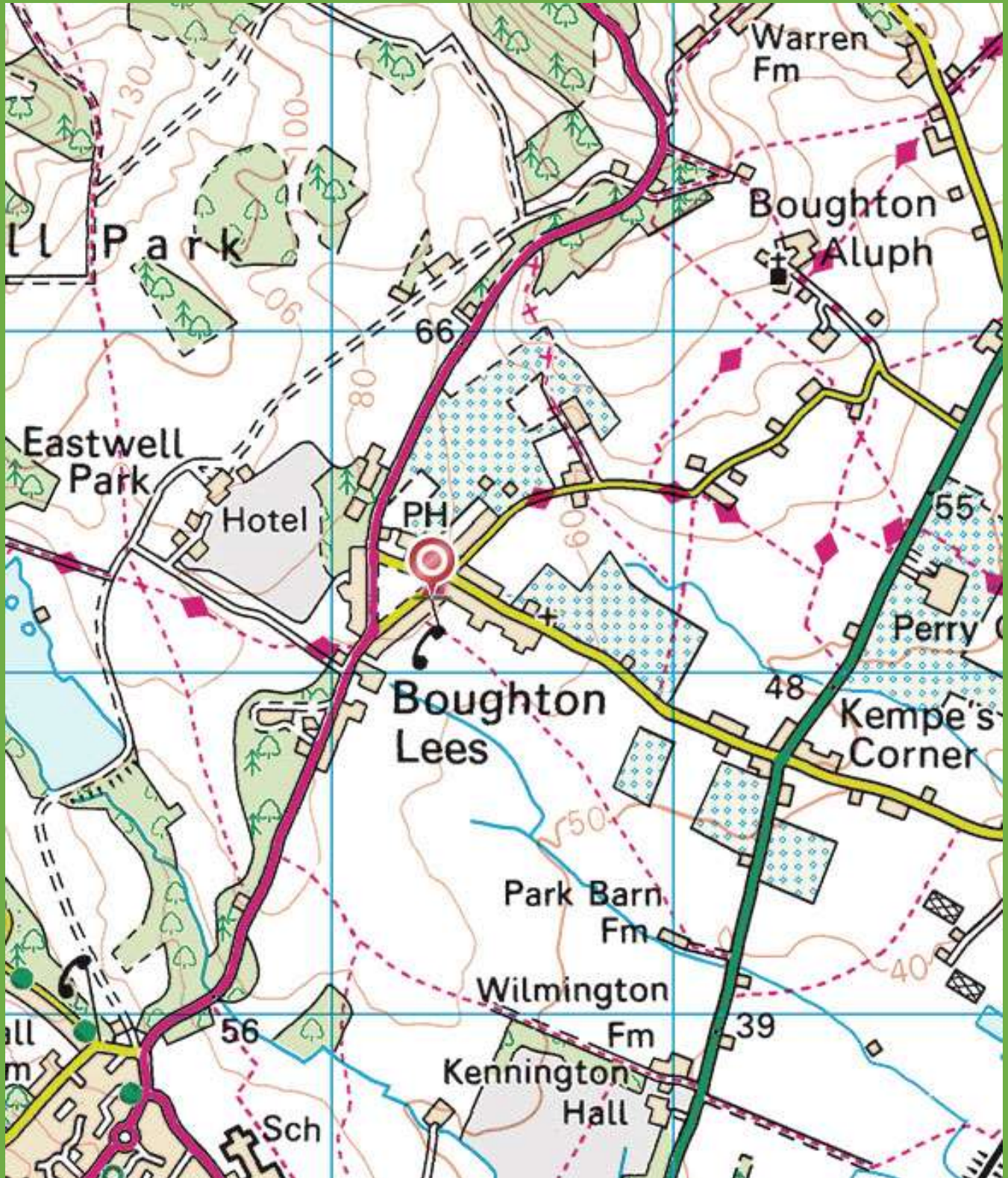
White lines were recently painted on the residential section of Wye Road as it joins The Lees in order to make the road appear even narrower than it already is to change driver perceptions and reduce vehicle speeds.

Pedestrians have to share the road with vehicles at the pinch-point in Wye Road approaching The Lees/Pilgrim's Way junction, including the many walkers that pass through our village every day.

The risk of accidents at this junction could be addressed by reducing the size of the junction by building out at the kerb at the end of The Lees (as shown in yellow). This will reduce the speed at which drivers can enter The Lees and improve the safety of vulnerable road users.



Tell us what you think. Fill in the questionnaire.



ll Park

Warren Fm

Boughton Aluph

Eastwell Park

Hotel

PH

Boughton Lees

Perry C

Kempe's Corner

Park Barn Fm

Wilmington Fm

Kennington Hall

Sch

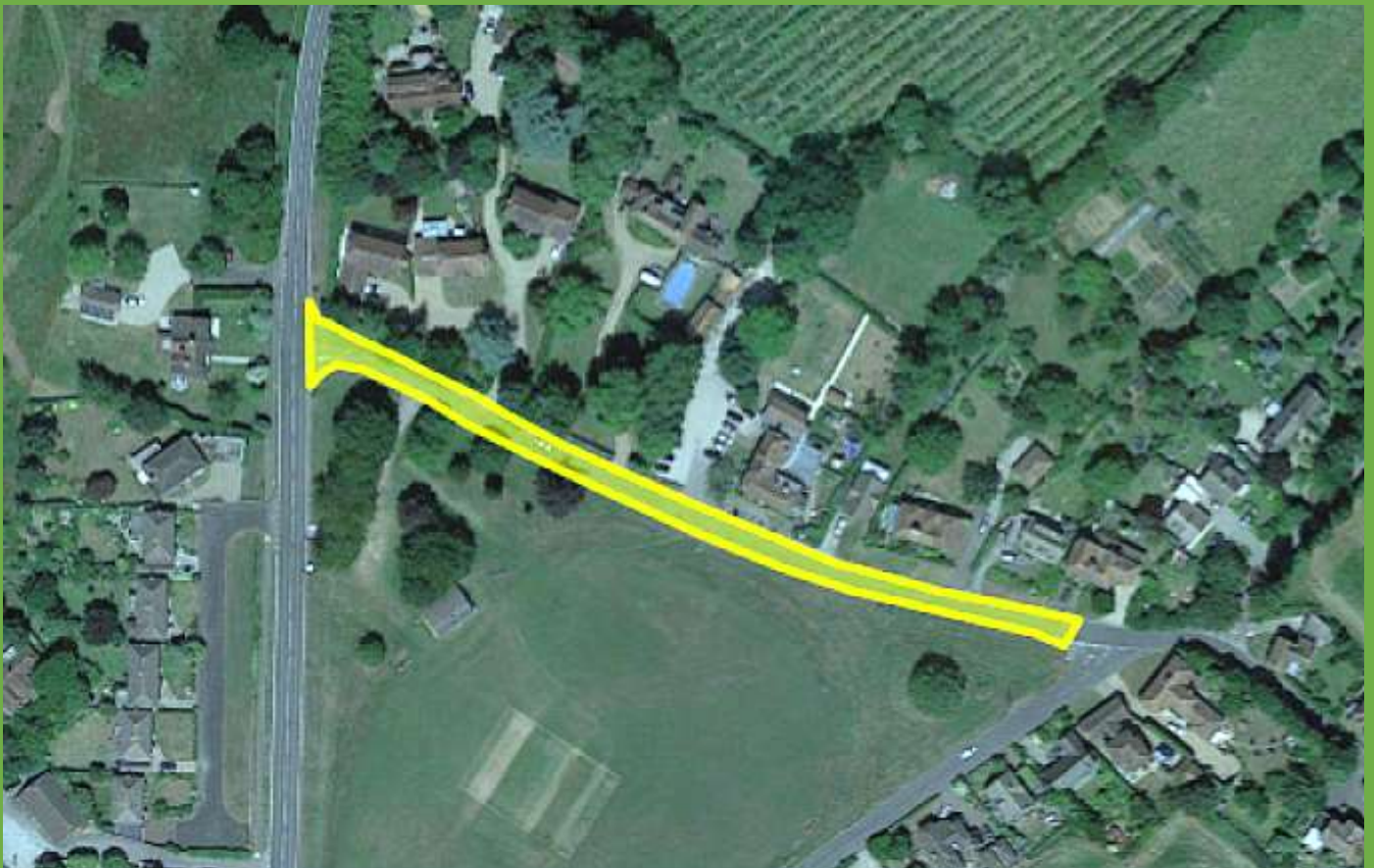
OPTION 4:

CREATE A “SHARED SPACE” ON WYE ROAD

Incidents at the junction of The Lees and Wye Road could be addressed by changes to the section of Wye Road fronting The Flying Horse.

The carriageway could be raised and incorporate a new surface treatment to create a “shared space” where there is no apparent priority for vehicles or pedestrians. This will require drivers to reduce speed, and further slow down when approaching the junction to The Lees.

Proposed location of shared space on Wye Road




An example of this concept can be found at Bank Street in Ashford where the shared space no longer gives priority to drivers and requires them to reduce vehicle speed.

Example of shared space, Bank Street in Ashford town centre



Tell us what you think. Fill in the questionnaire.



**What other options
might improve road
safety in our parish?**

In addition to the traffic management solutions put forward by the traffic consultants, there are two further proposals on which we want your views.

These might be combined with one or more of options 1 to 4 to form a comprehensive strategy for traffic management in the village for the years to come. We also want to hear your ideas.

Please think about how you might be able to help us to work towards a common goal of improving road safety in our community. We will need your help to bring about change.

OPTION 5:

SPEED LIMIT CHANGES

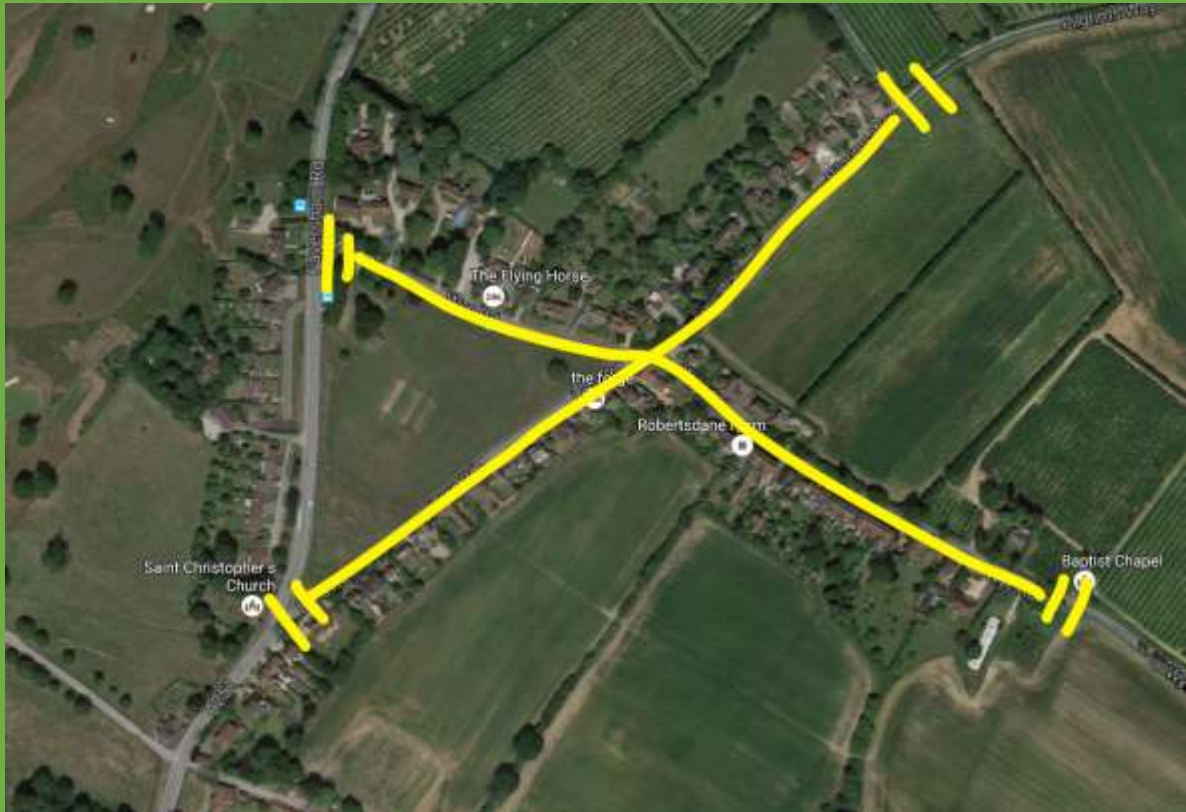
We could campaign for speed limit changes. This can be done on most roads without the need for any physical traffic calming measures, although it could also be combined with one or more of options 1 to 4.

We think a reduction in local speed limits will improve road safety with minimal impact on local journey times. Lower speeds reduce the risk and severity of road collisions. Reducing traffic speed helps make people feel more confident about being on their local streets and helps children and elderly people to travel independently and safely.

Calmer road speeds also help to make walking and cycling more attractive options, contributing to less traffic congestion, better health, less noise, more social interaction, an improved environment and stronger communities.

We want to hear your views on the following three options for changed speed limits in and around the village:

- a. A 20mph local speed limit on the residential sections of Wye Road, The Lees and Pilgrims Way as marked in yellow.



This might be demarcated by signs on the road and village gates.



- b. A 30mph speed limit on Wye Road between the Baptist Chapel and Kempes Corner.

- c. A 30mph speed limit on the residential section of the A251 Faversham Road as marked in yellow.



The speed of traffic on this section of Faversham Road currently cuts our village in two.

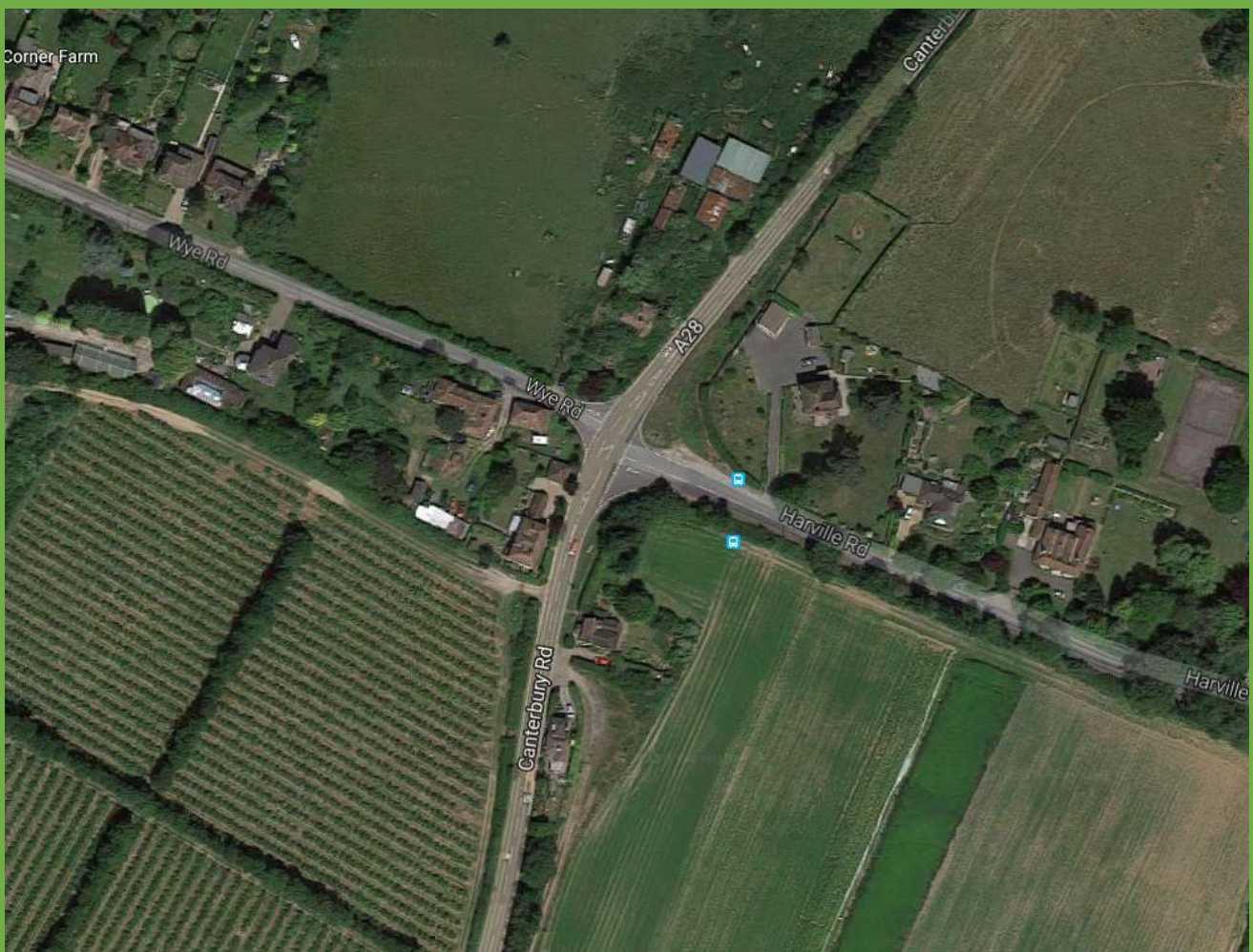
To achieve this change we may need to mobilise residents to form a local pressure group. Whether it is signing a petition, attending meetings, monitoring traffic speeds or counting vehicles, we cannot bring about change without YOU. Would you be prepared to help us to campaign for a reduction in local speed limits?

Tell us what you think. Fill in the questionnaire.

OPTION 6:

JUNCTION CONTROL BY TRAFFIC LIGHTS OR ROUNDABOUT AT KEMPES CORNER

Residents know well that this junction can be particularly difficult to pull out of due to limited visibility. This was acknowledged by the consultants in the 2014 Traffic Survey.



It is the case that the number of recorded accidents at the junction is higher than the typical level of 3 incidents over a 3 year period at a priority junction.

However, the number of accidents is not according to Kent County Council (KCC) Highways criteria sufficient to create significant safety concerns.

Nevertheless, the highway authority has spent time and money on this junction in past years including the installation of automatic warning lights. KCC Highways current position is that “significant upgrades to this junction are most likely unfeasible due to the requirement for additional land and associated costs.”

While this option may be difficult to deliver, it was a resident-led campaign that brought about a reduction in the speed limit at Kempes Corner. If you think it important, we could help to mobilise residents to exert pressure on KCC Highways for junction control by traffic lights or a roundabout. Or do you have an alternative idea for improving safety at this junction?

Whether it is signing a petition, attending meetings, monitoring traffic speeds or counting vehicles, we cannot bring about change without YOU. Would you be prepared to help us to campaign for junction control at Kempes Corner?

Tell us what you think. Fill in the questionnaire.

Please post your ideas for improving road safety in our community here.



Please place your completed questionnaire in the box before your leave. Thank you.